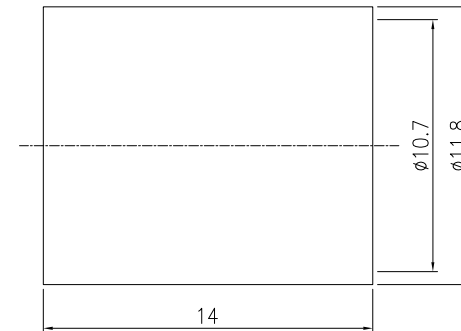
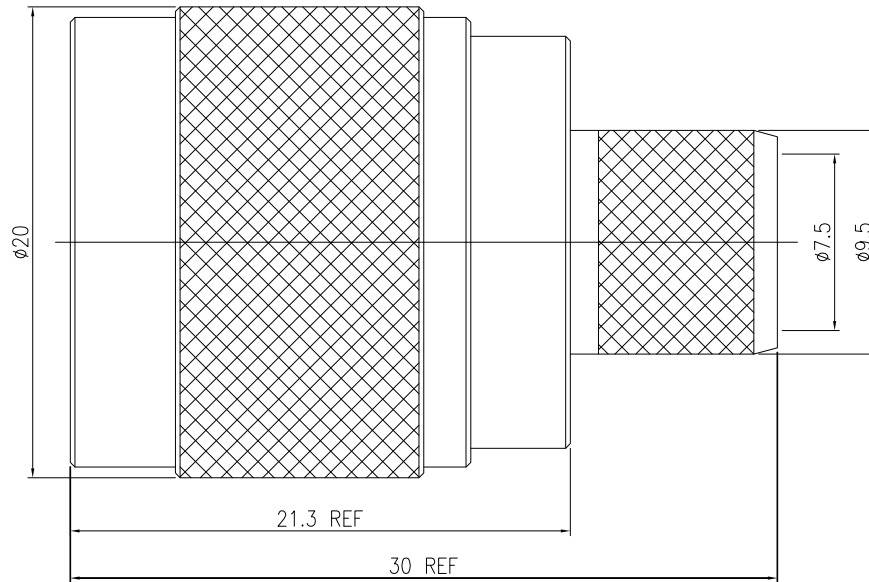


RECOMMENDED  
CABLE STRIPPING DIM'S





8.	Ferrule	Brass	1	White Bronze
7.	Shell	Brass	1	White Bronze
6.	Gasket	Si-Rubber	1	Red
5.	Retaining Ring	Brass	1	Nickel
4.	Chassis	Brass	1	White Bronze
3.	Insulation	Teflon	1	None
2.	Pin	Brass	1	Gold
1.	Body	Brass	1	White Bronze
NO.	DESCRIPTION	MATERIAL	Q' TY	FINISH

△	-/-/-	-
△	-/-/-	-
△	-/-/-	-
△	-/-/-	-
△	-/-/-	-
△	-/-/-	-
△	-/-/-	-
△	-/-/-	-
△	-/-/-	-
△	10/26/17	Initial
REV	DATE	DESCRIPTION
REVISION		

Tolerance	
.X	±0.2
.XX	±0.1
.XXX	±0.05
ANGLE	±0.5°
PROPRIETARY AND CONFIDENTIAL	
THE INFORMATION IN THIS DRAWING IS THE SOLE PROPERTY OF TCC INDUSTRIES, INC.. ANY REPRODUCTION IN PART OR AS A WHOLE WITHOUT THE WRITTEN PERMISSION OF TCC INDUSTRIES, INC. IS PROHIBITED.	

TITLE
N Male Fast Connector for TCC Cable Group T

 <b>TCC INDUSTRIES INC.</b> <small>7050 Village Drive unit E, Buena Park, CA 90621-2282          Tel. 714.523.8885 - FAX. 714.562.0888          E-Mail: info@tccinc.com Website: www.tccinc.com</small>	
PART NUMBER	
11-11T-EK-TGA	
Size	Scale
A	NTS
Comments	Sheet
	1 of 1